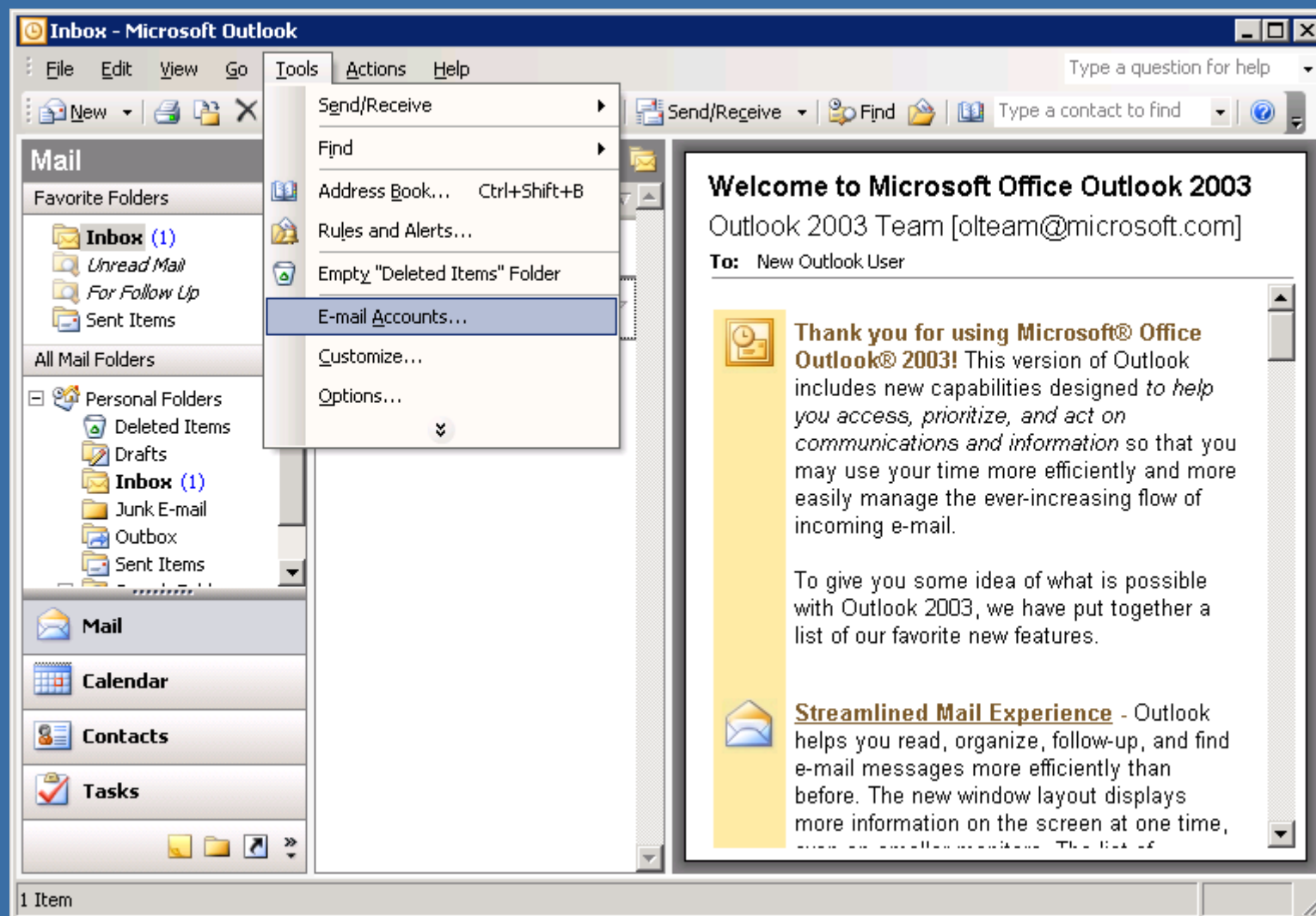
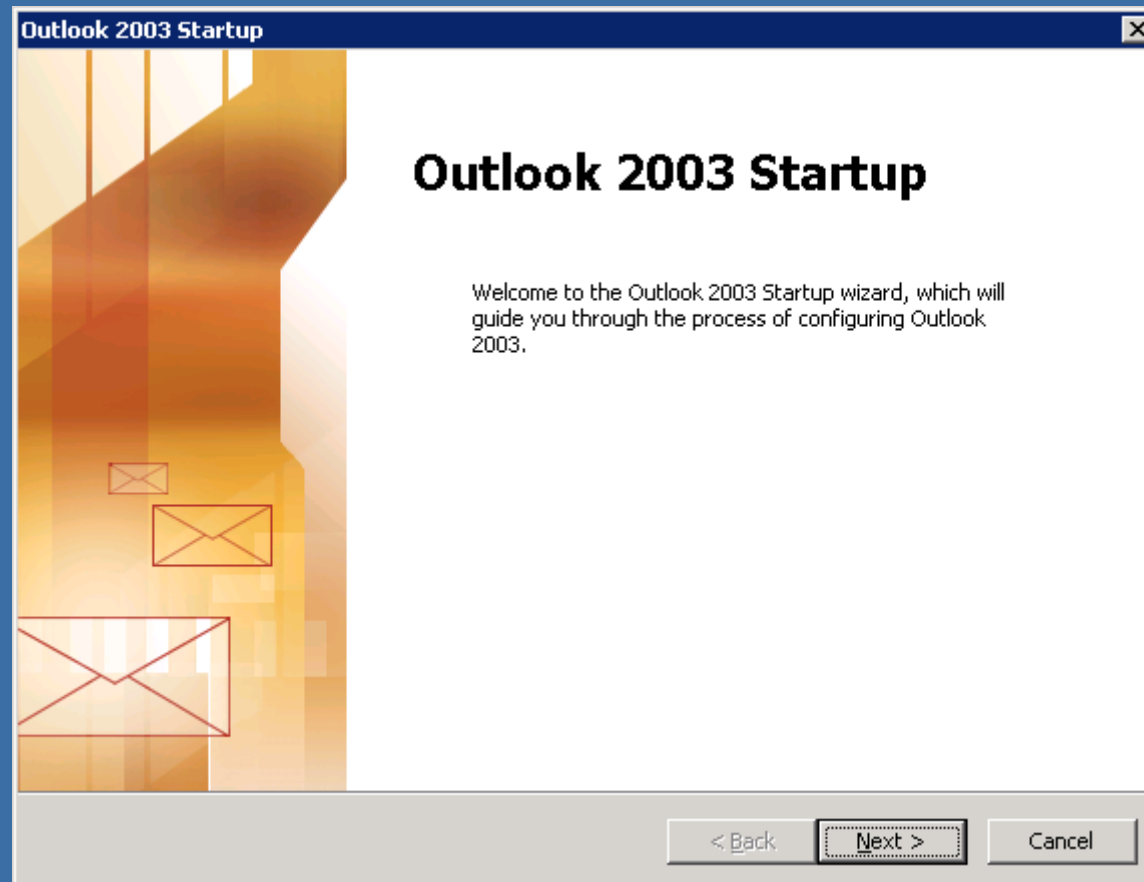


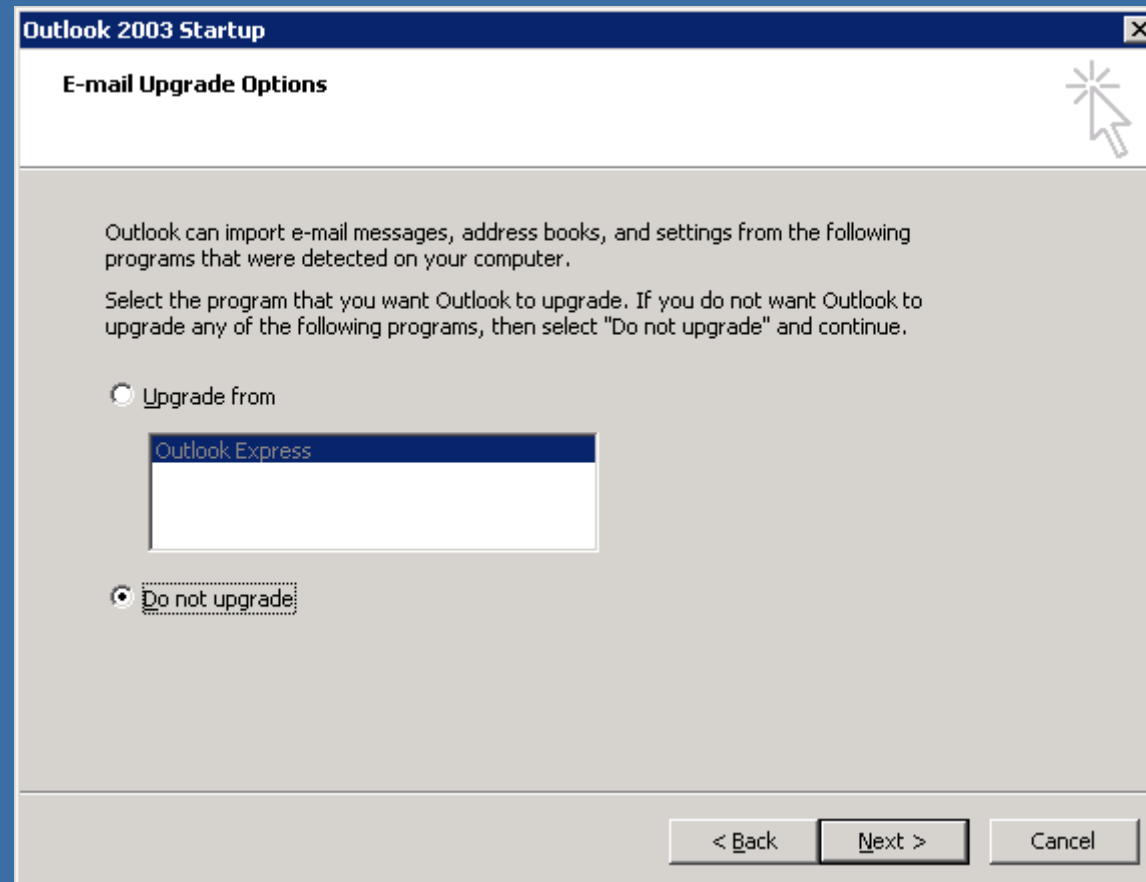
Pas 1: Se deschide meniul Tools, apoi se alege Accounts (daca nu ati mai pornit Outlook-ul, este posibil sa va apara un wizard, detalii [aici](#))



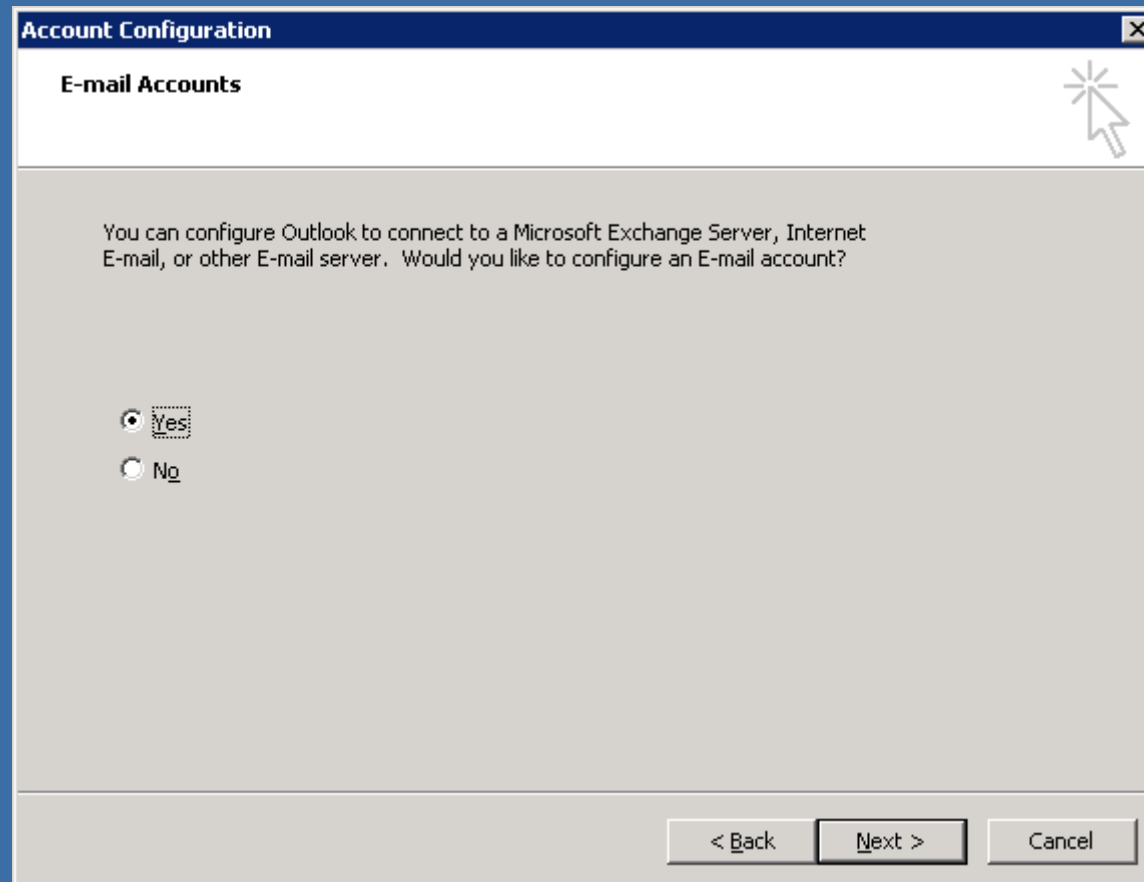
Pas 1 (wizard): Welcome



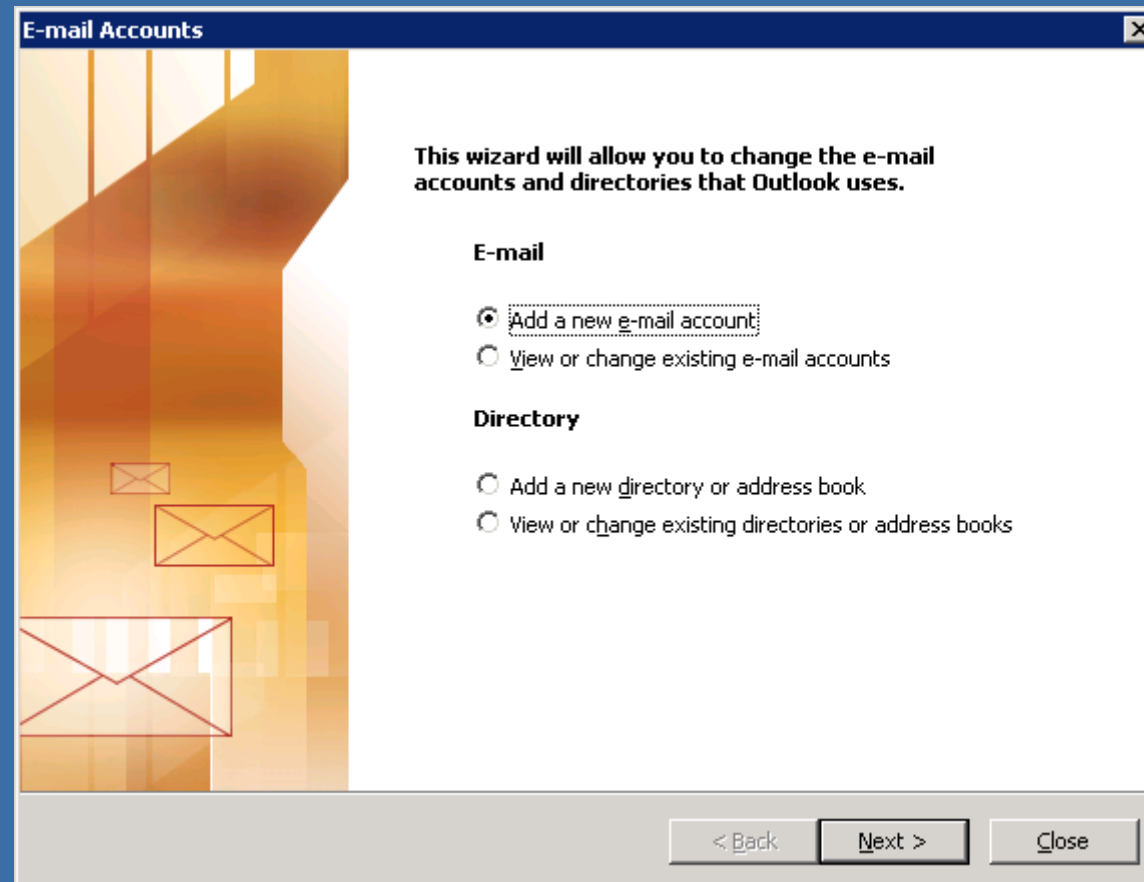
Pas 2 (wizard): Selectati Do not upgrade (decat daca ati configurat/folosit deja Outlook Express - nerecomandabil)



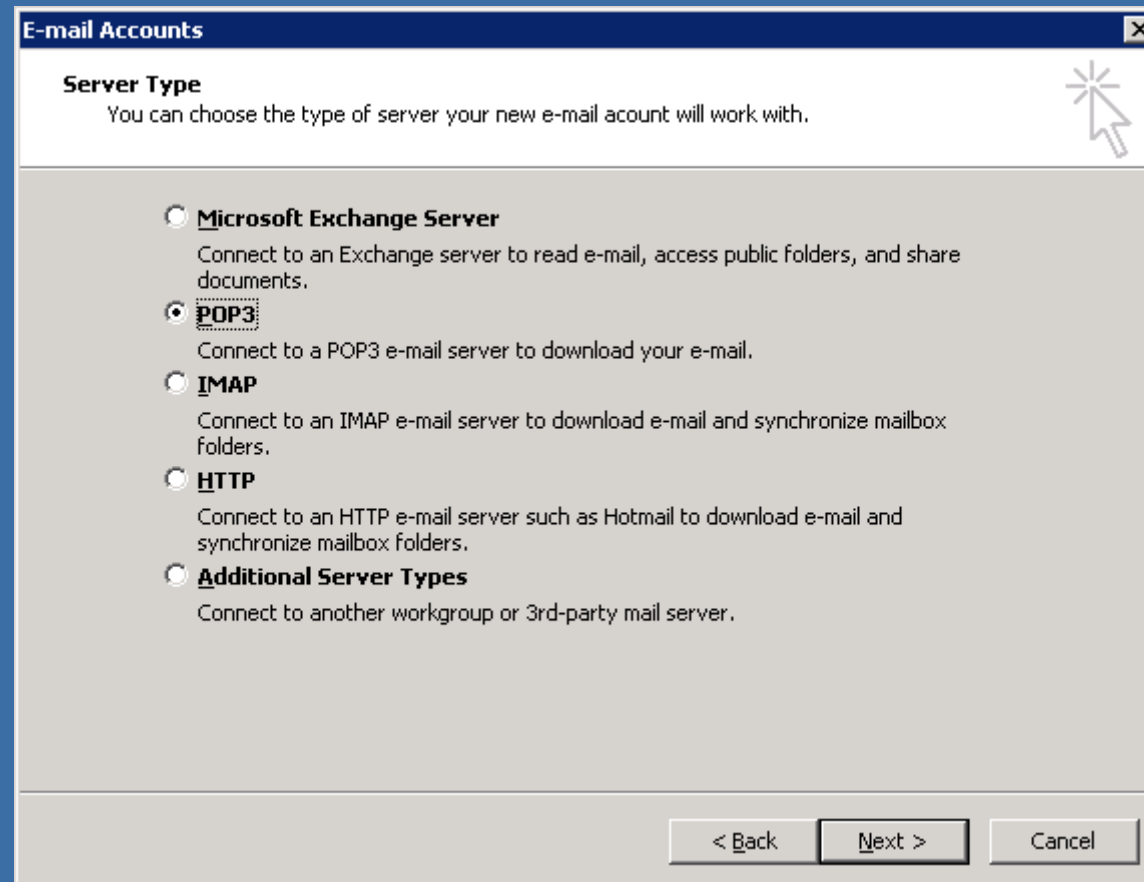
Pas 3 (wizard): Selectati raspunsul Yes la intrebarea “Would you like to configure an E-mail Account?”



Pas 2: Din fereastra aparuta se selecteaza Add a new e-mail account



Pas 3: Selectam POP3



Pas 4: Se completeaza campurile conform descrierii de mai jos

Prenume, Nume (Acestea vor aparea in antetul mesajelor trimise la sectiunea "From:")

Adresa de e-mail, in notificare: "Adresa de E-mail"

Incoming mail server:
pop.gtstelecom.ro

Outgoing mail server:
relay.gtstelecom.ro

User name – in notificare
"Numele de acces la mailbox"

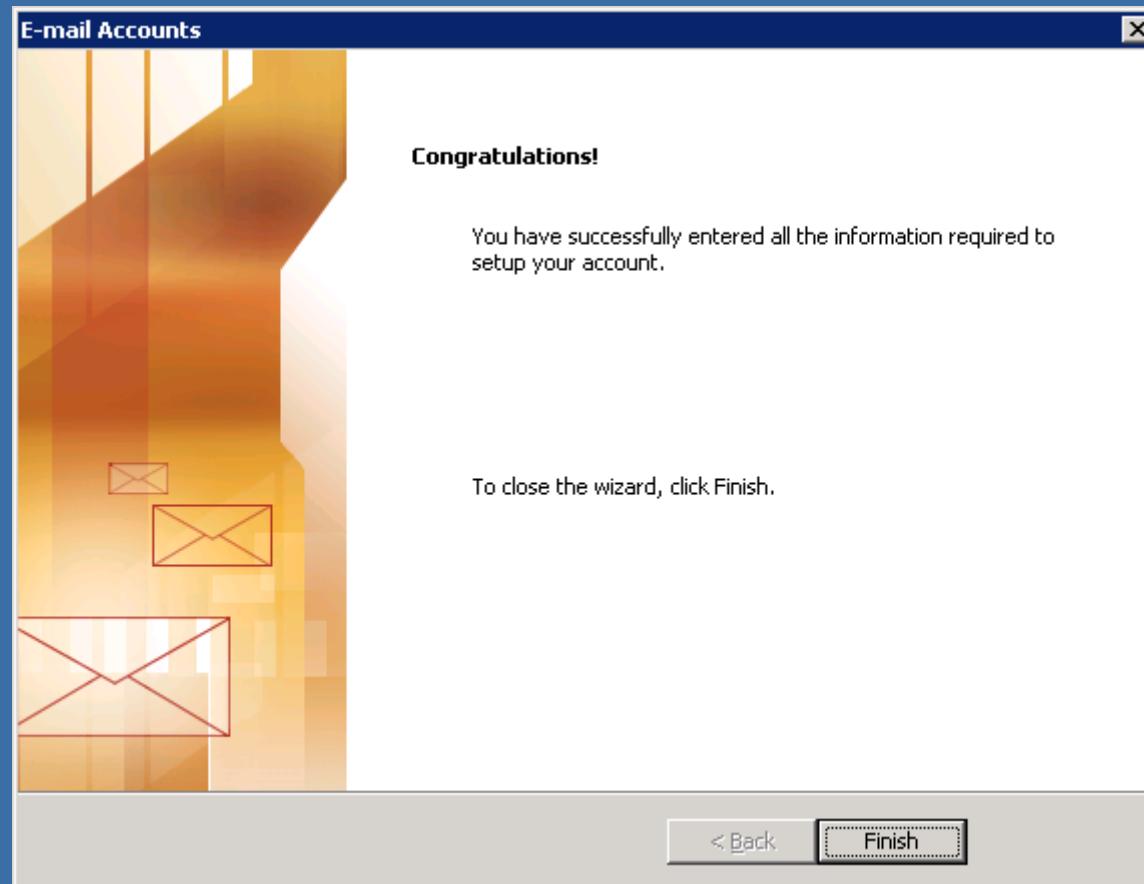
Password – in notificare
"Parola initiala de acces la mailbox"

The screenshot shows a Windows-style dialog box titled "E-mail Accounts" with a close button (X) in the top right corner. Below the title bar, the text "Internet E-mail Settings (POP3)" is displayed, followed by the instruction "Each of these settings are required to get your e-mail account working." and a mouse cursor icon. The dialog is divided into four sections: "User Information", "Server Information", "Logon Information", and "Test Settings".

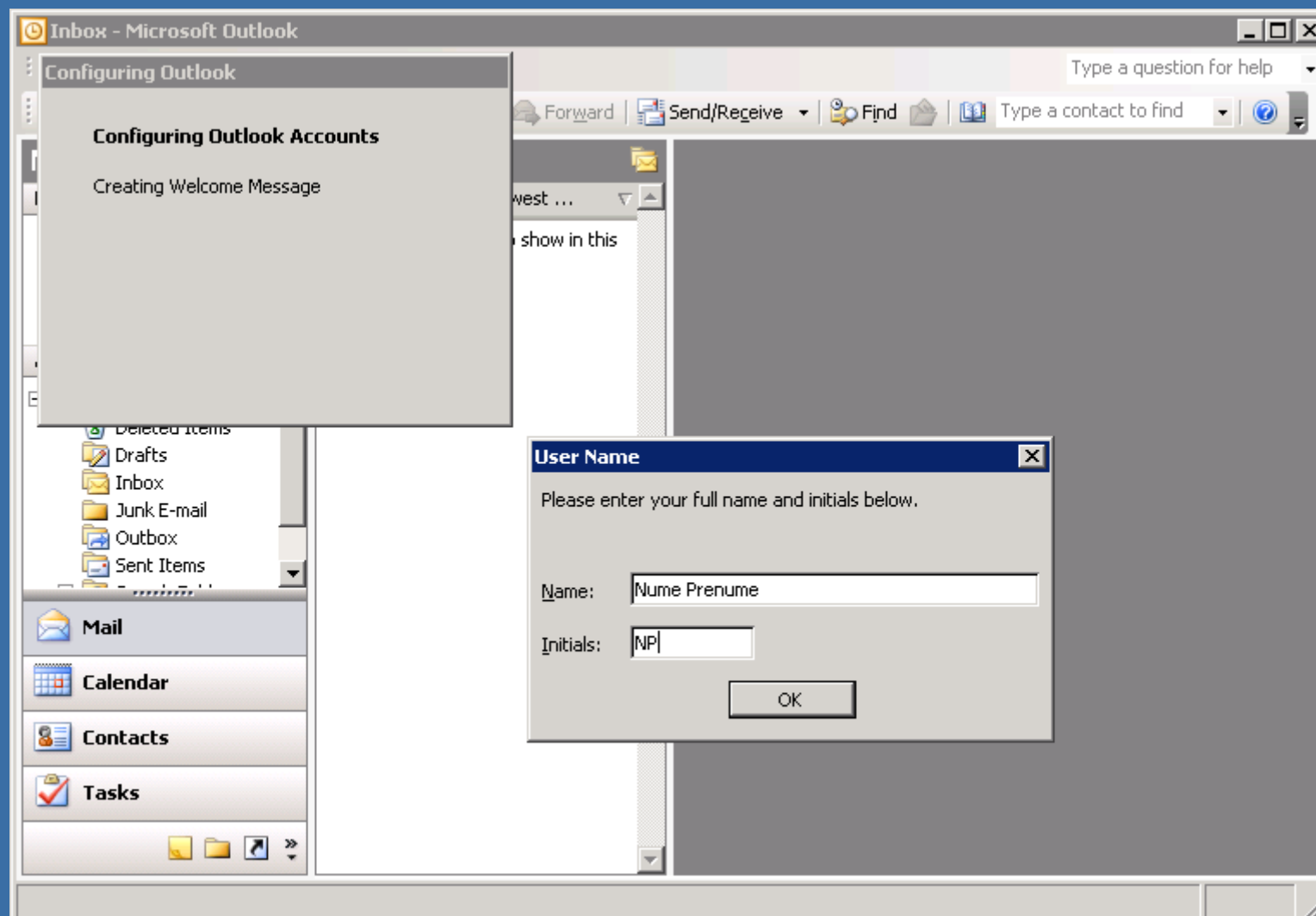
- User Information:** "Your Name:" field contains "Prenume Nume"; "E-mail Address:" field contains "email@domeniu.ro".
- Server Information:** "Incoming mail server (POP3):" field contains "pop.gtstelecom.ro"; "Outgoing mail server (SMTP):" field contains "relay.gtstelecom.ro".
- Logon Information:** "User Name:" field contains "user.tip"; "Password:" field contains "*****"; a checked checkbox "Remember password" is present; an unchecked checkbox "Log on using Secure Password Authentication (SPA)" is also present.
- Test Settings:** A text block reads: "After filling out the information on this screen, we recommend you test your account by clicking the button below. (Requires network connection)". Below this text are two buttons: "Test Account Settings ..." and "More Settings ...".

At the bottom of the dialog, there are three buttons: "< Back", "Next >", and "Cancel".

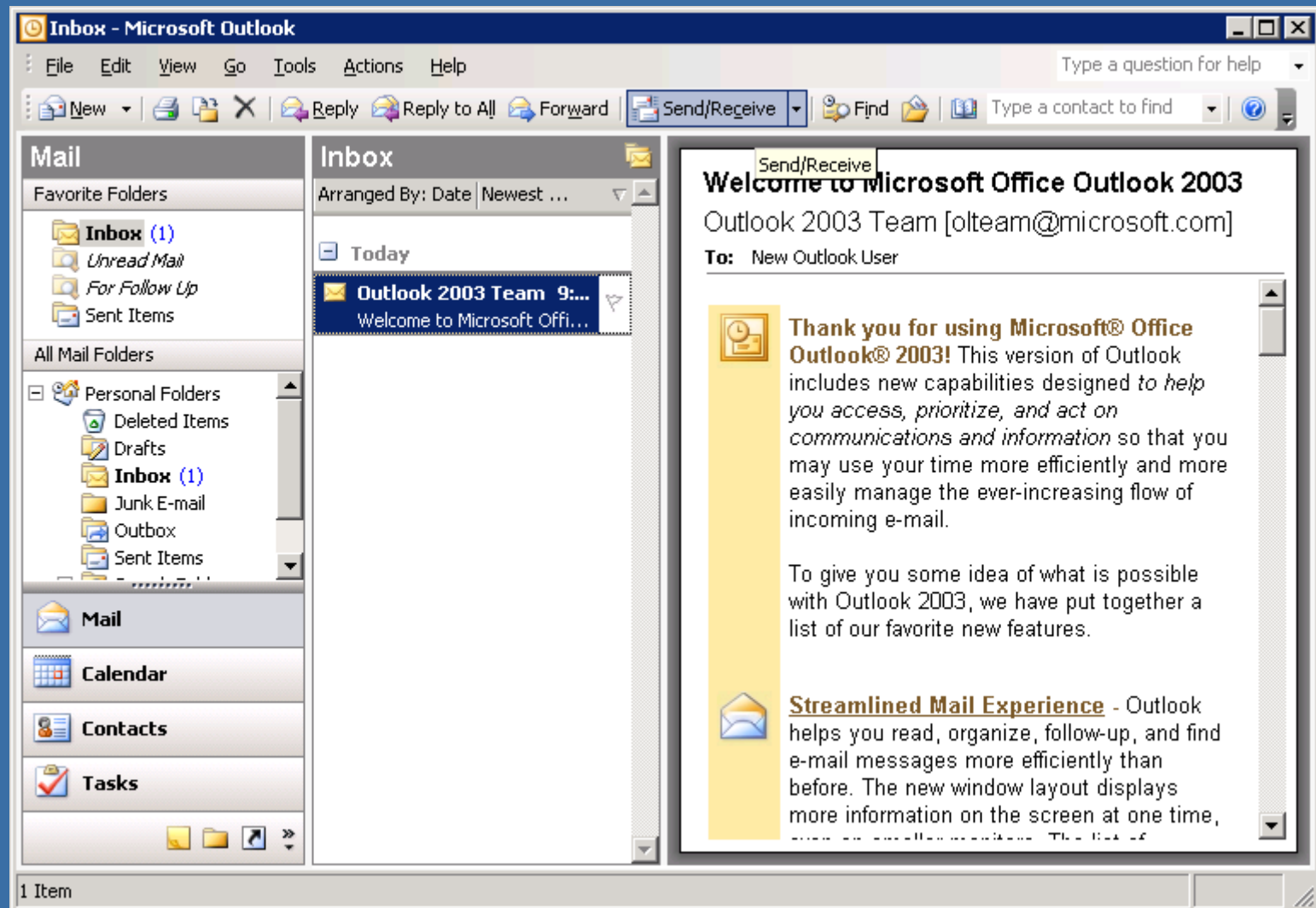
Pas 5: Finalizare wizard



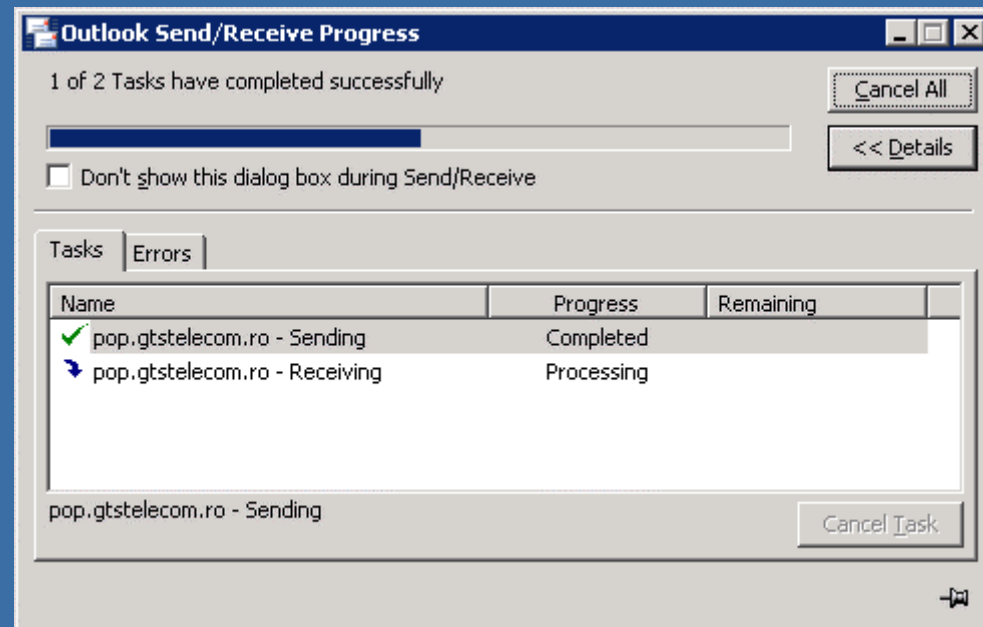
Pas 6: Este posibil dupa finalizarea wizard-ului sa vi se ceara inca o data numele dumneavoastra si initialele respective



Pas 7: Pentru receptia mesajelor stocate pe server si transmitia celor pregatite de trimitere, apasati butonul Send/Receive:



Pas 8: Dupa ce ati apasat Send/Receive, se face conectarea la server pentru transferul mesajelor. Pentru observarea detaliata a operatiilor apasati butonul Details



Pas 9: In caz ca perechea Username/Password este gresita, veti primi un mesaj de eroare impreuna cu un pop-up window in care sunteti rugat sa introduceti datele corecte (atentie la litere MARI/mici)



Enter Network Password

 Please type your user name and password.

Server: pop.gtstelecom.ro

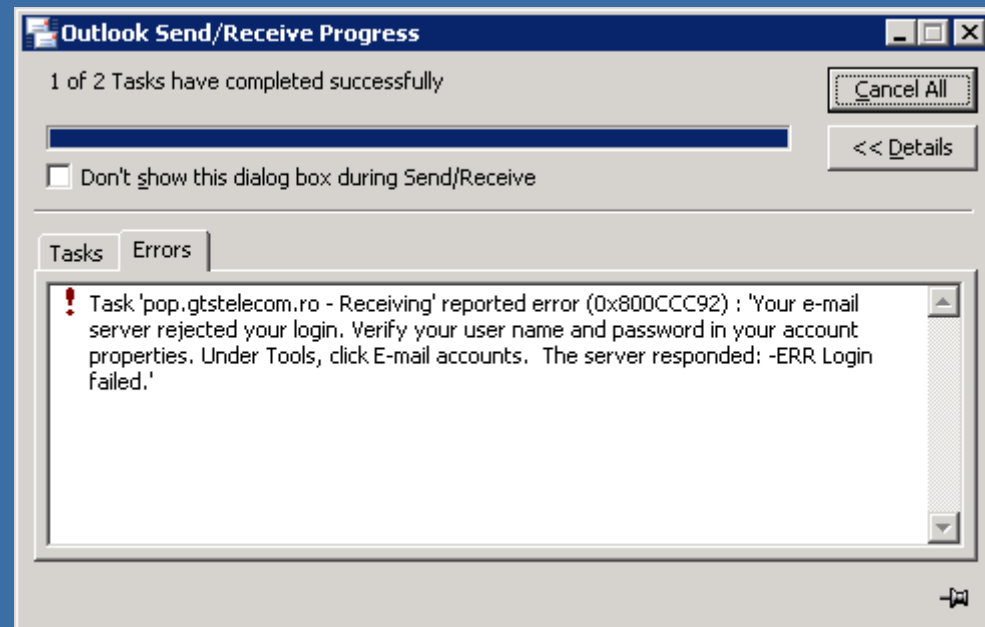
User Name: user.tip

Password: *****

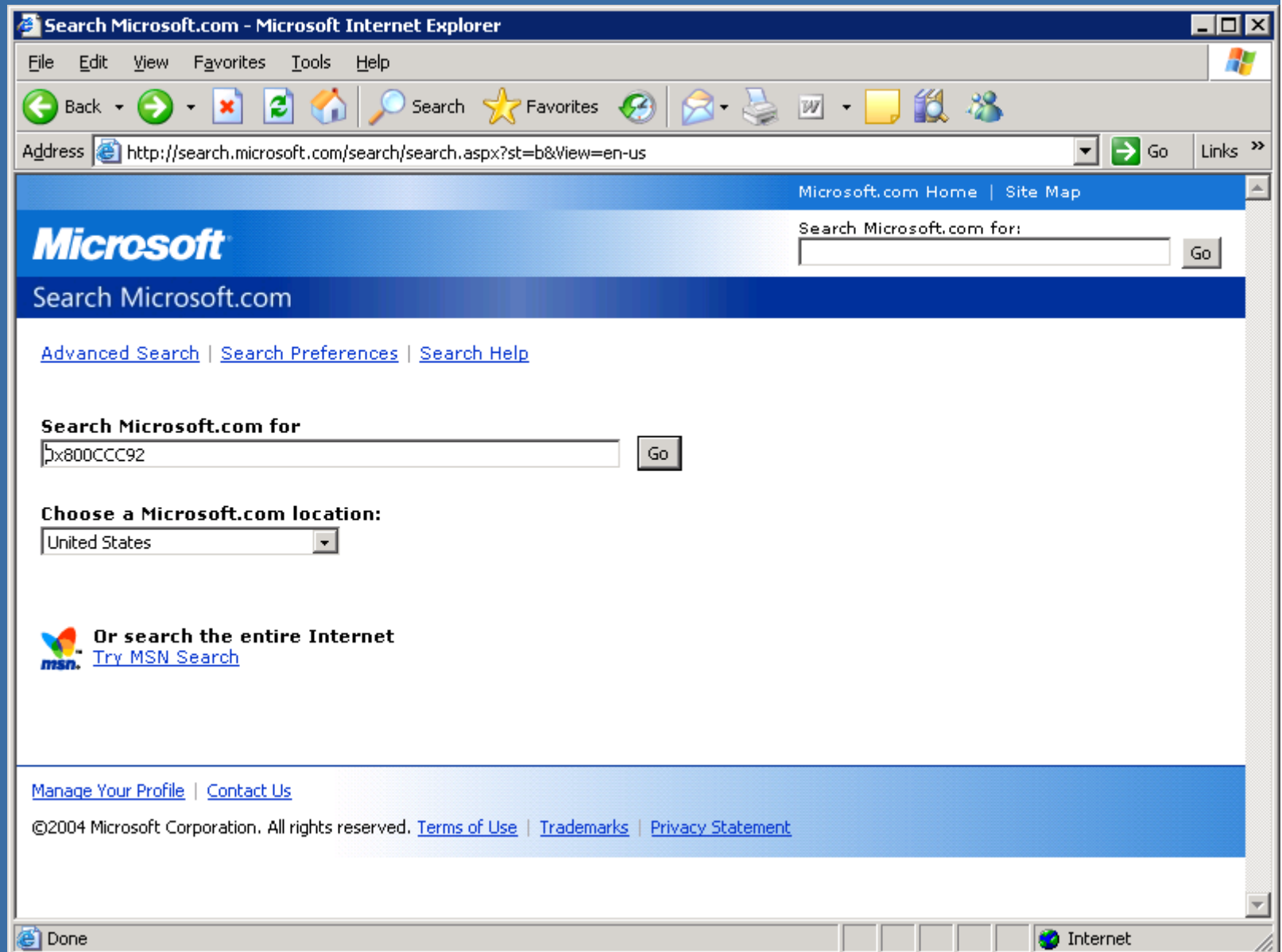
Save this password in your password list

OK Cancel

Pas 10: In caz de eroare, vi se ofera si detalii. Cu aceste detalii se pot afla informatii suplimentare pe site-ul <http://search.microsoft.com>



Pas 11: Exemplu pentru eroarea din slide-ul precedent:



Pentru mai multe informatii:

GTS Telecom SRL

Office: 021 4100100

Tehnic: 021 4025555