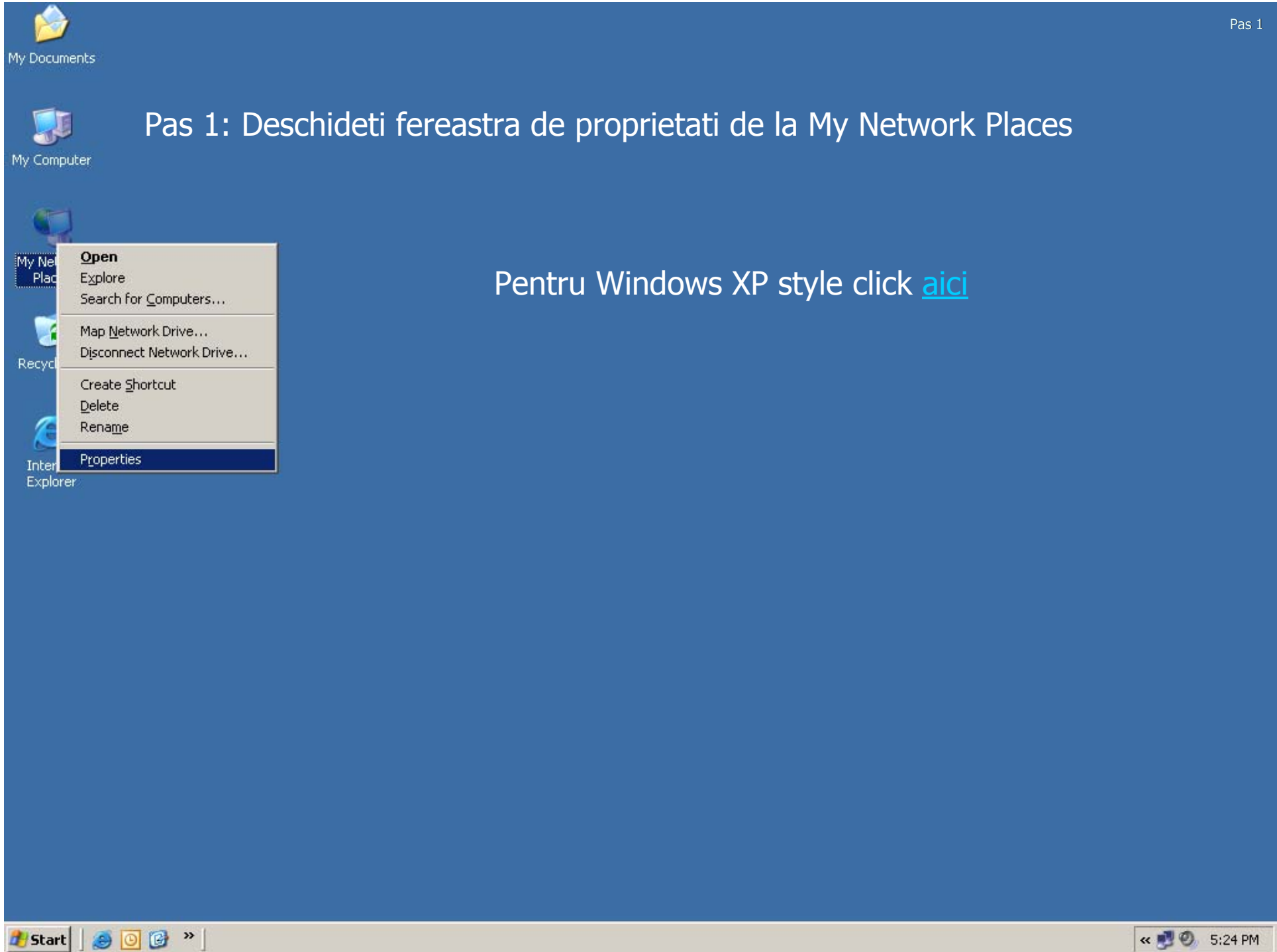


Pas 1: Deschideti fereastra de proprietati de la My Network Places

Pentru Windows XP style click [aici](#)





Pas 1 (XP): Deschideti Control Panel

Administrator

- Internet**
Internet Explorer
- E-mail**
Microsoft Office Outlook
- Paint
- System Information
- Calculator
- Tour Windows XP
- Windows Update
- Command Prompt
- All Programs** ▶

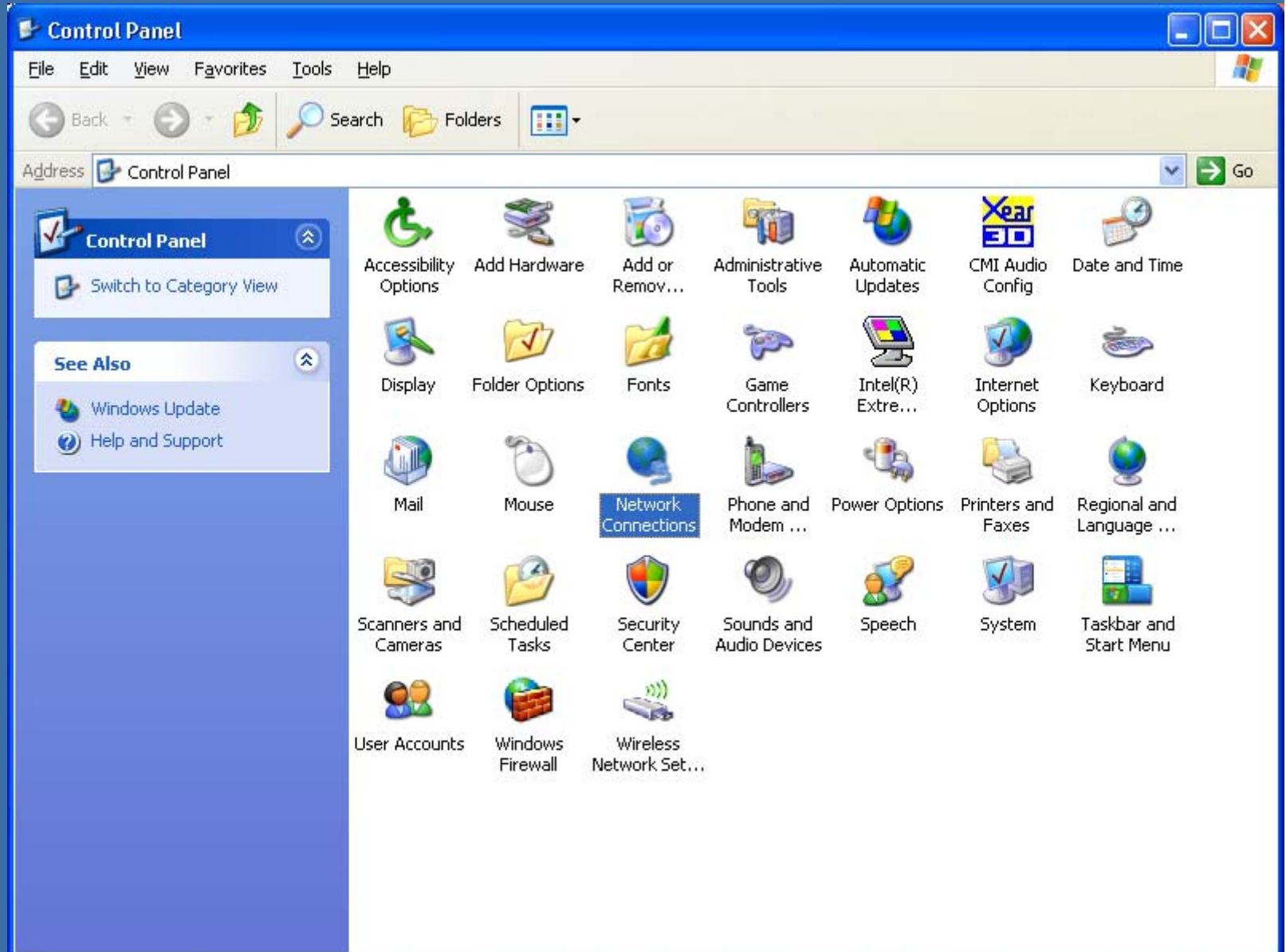
- My Documents**
- My Recent Documents** ▶
- My Pictures**
- My Music**
- My Computer**
- Control Panel**
- Set Program Defaults
- Printers and Faxes
- Help and Support
- Search
- Run...

Provides options for you to customize the appearance and functionality of your computer, add or remove programs, and set up network connections and user accounts.

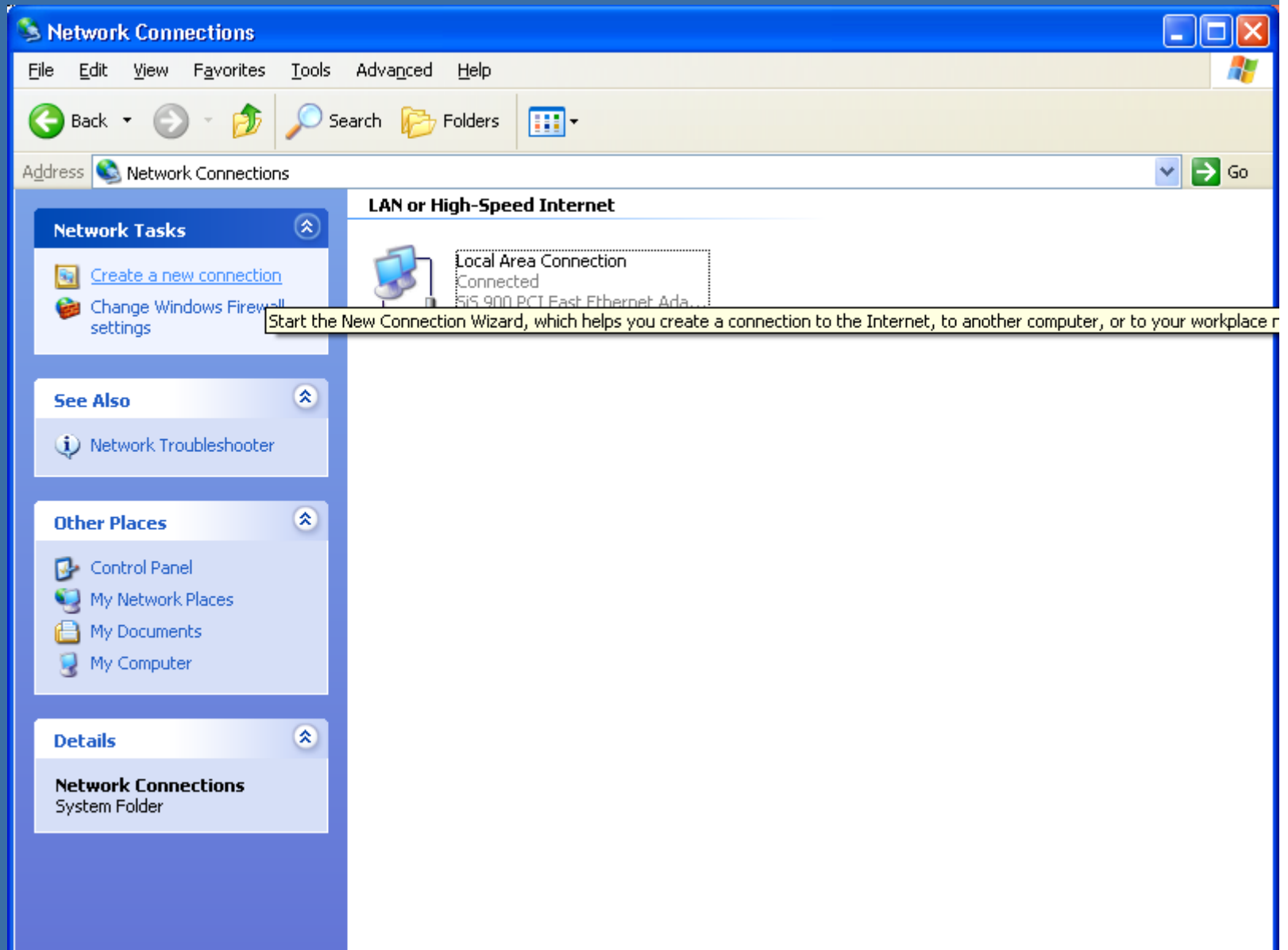
Log Off Shut Down

start [taskbar icons] 5:55 PM

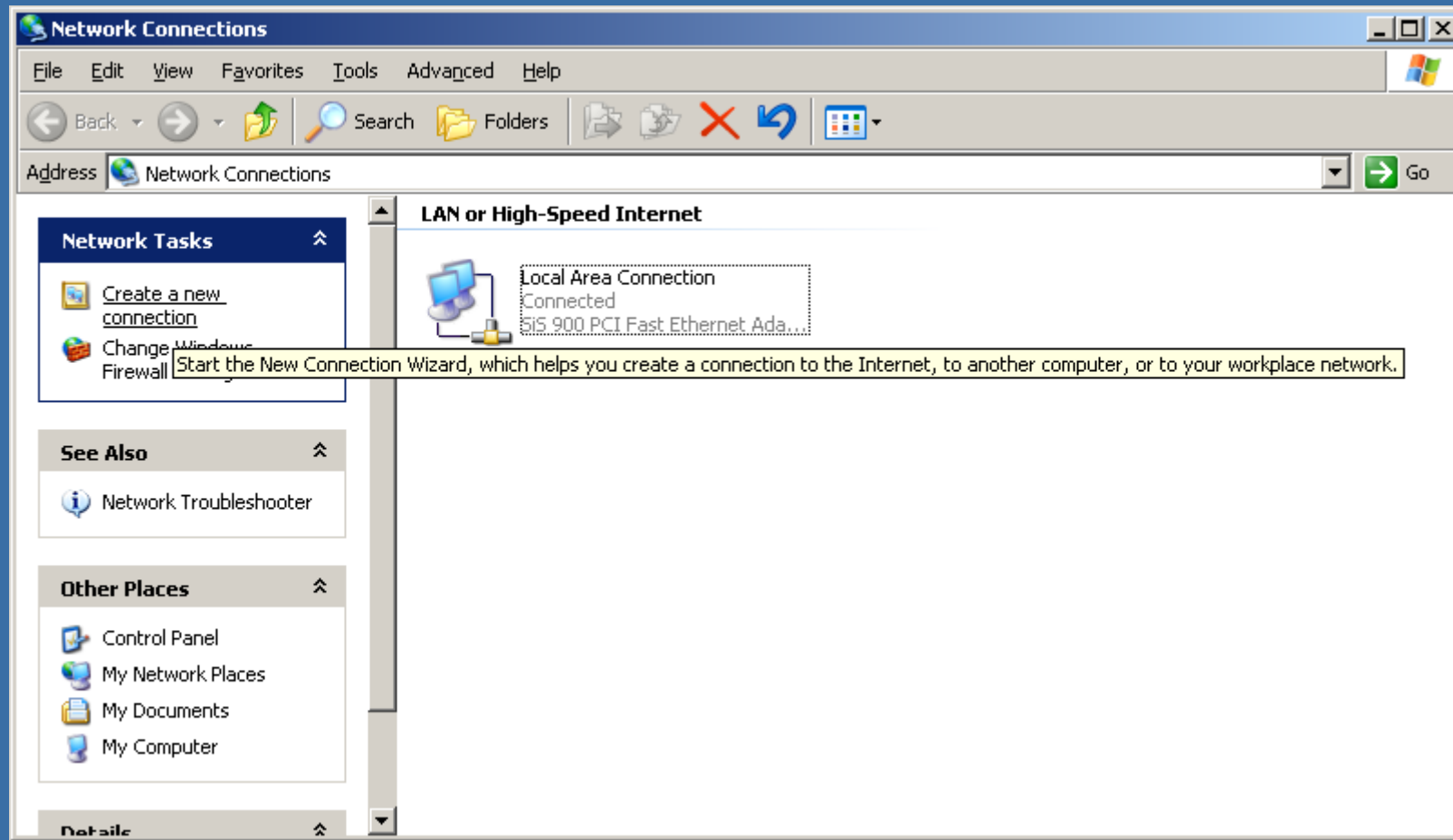
Pas 2 (XP): Deschideti Network Connections



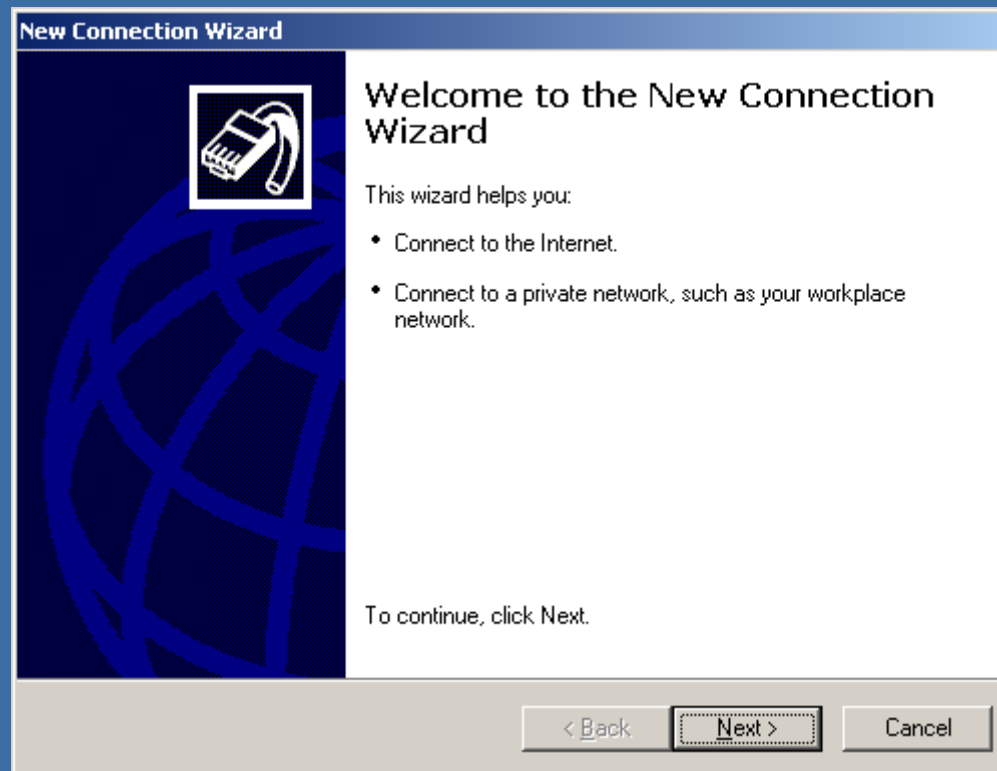
Pas 3 (XP): din Network Tasks, dati click pe Create a new connection (de aici configurarea este asemanatoare cu Windows Classic Style)



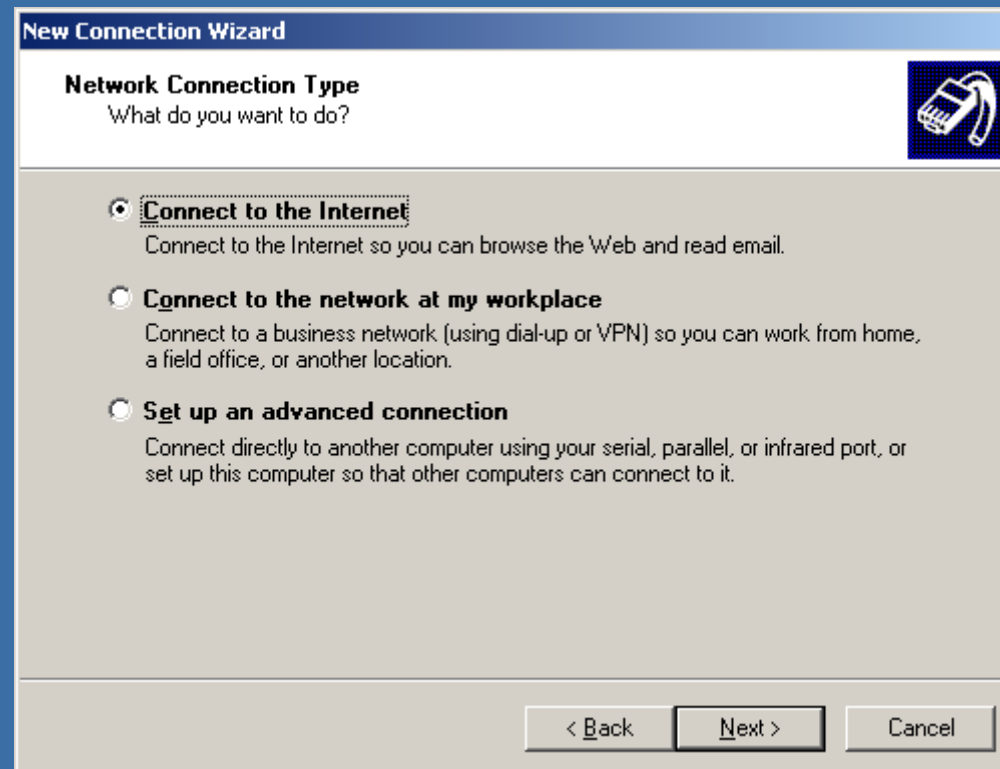
Pas 2: Deschideti New Connection Wizard sau ...
... din Network Tasks, dati click pe Create a new connection



Pas 3: Next



Pas 4: Connect to the Internet




Pas 5: Set up my connection manually



New Connection Wizard

Getting Ready
The wizard is preparing to set up your Internet connection.

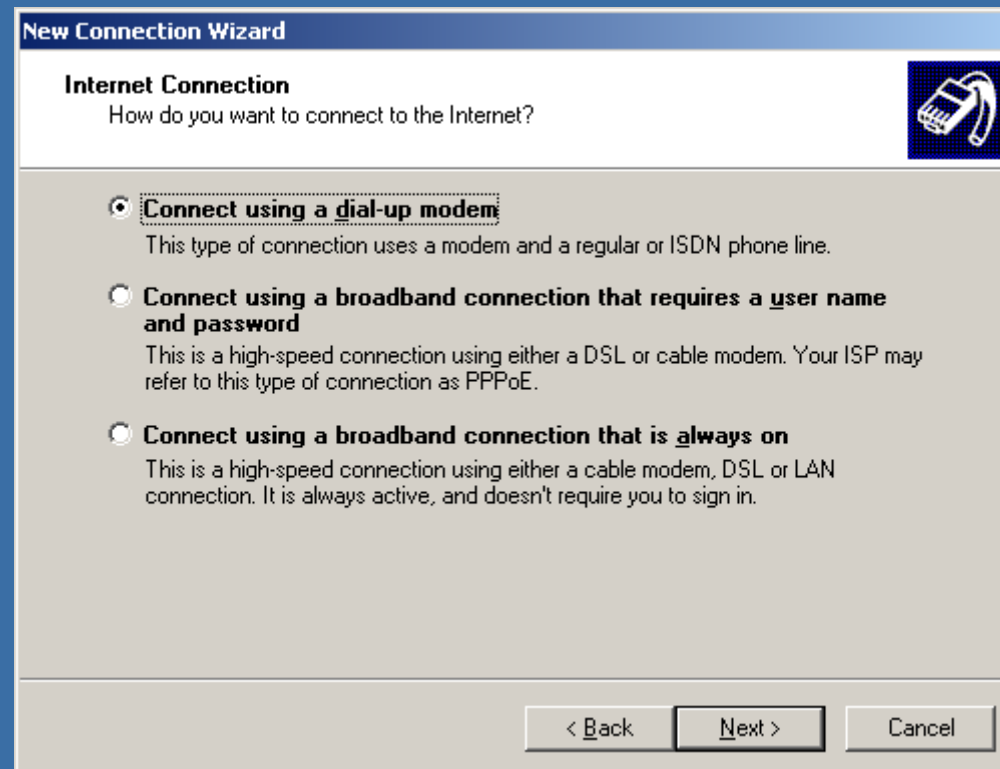


How do you want to connect to the Internet?

- Choose from a list of Internet service providers (ISPs)**
- Set up my connection manually**
For a dial-up connection, you will need your account name, password, and a phone number for your ISP. For a broadband account, you won't need a phone number.
- Use the CD I got from an ISP**

< Back Next > Cancel


Pas 6: Connect using a dial-up modem



Pas 7: Numele conexiunii

New Connection Wizard

Connection Name
What is the name of the service that provides your Internet connection?



Type the name of your ISP in the following box.

ISP Name

The name you type here will be the name of the connection you are creating.

< Back Next > Cancel


Pas 8: Numarul de telefon al serviciului de dial-up

Pentru alte orase decat Bucuresti si pentru informatii la zi va rugam sa vizitati: <http://www.gtstelecom.ro/maps/>

Location	Modem phone	Modem speed
Arad	(0257) 20 13 98	56 Kbps
Bacău	(0234) 20 24 00	56 Kbps
Braşov	(0268) 40 24 00	56 Kbps
Bucharest	(021) 303 24 00	56 Kbps
Cluj Napoca	(0264) 40 24 00	56 Kbps
Constanţa	(0241) 70 24 00	56 Kbps
Craiova	(0251) 40 24 98	56 Kbps
Galaţi	(0236) 30 74 00	56 Kbps
Piatra Neamţ	(0233) 20 74 00	56 Kbps
Ploieşti	(0244) 40 24 00	56 Kbps
Sibiu	(0269) 20 74 00	56 Kbps
Târgu Mureş	(0265) 20 74 00	56 Kbps
Timișoara	(0256) 30 24 00	56 Kbps

New Connection Wizard

Phone Number to Dial
What is your ISP's phone number?

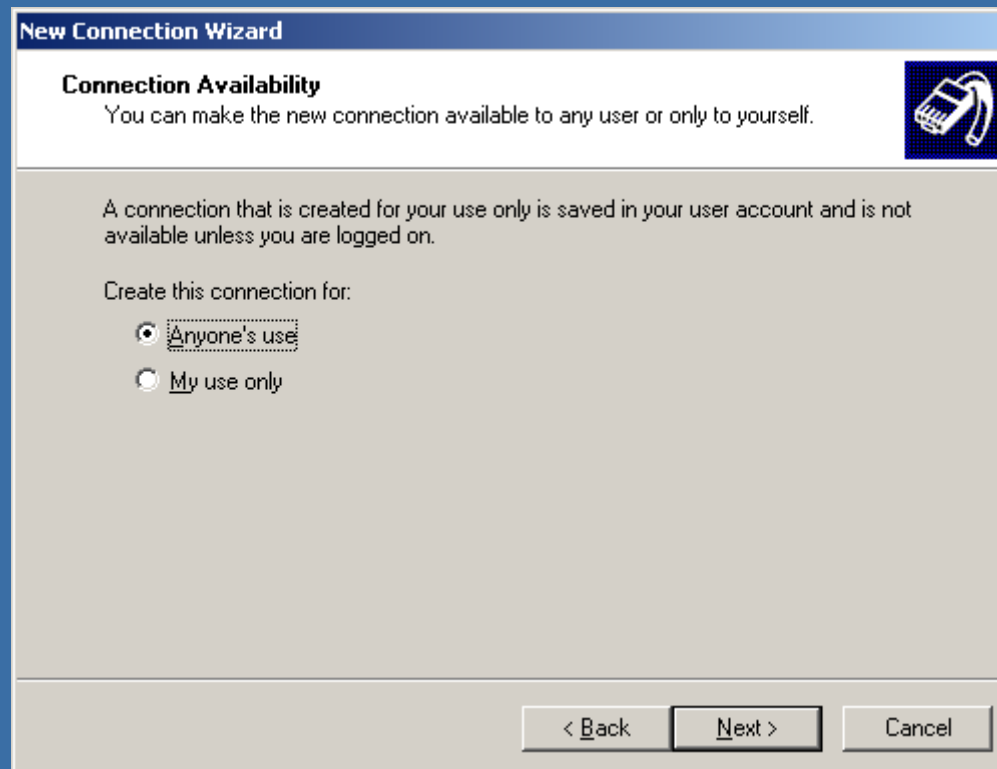


Type the phone number below.

Phone number:

You might need to include a "1" or the area code, or both. If you are not sure you need the extra numbers, dial the phone number on your telephone. If you hear a modem sound, the number dialed is correct.

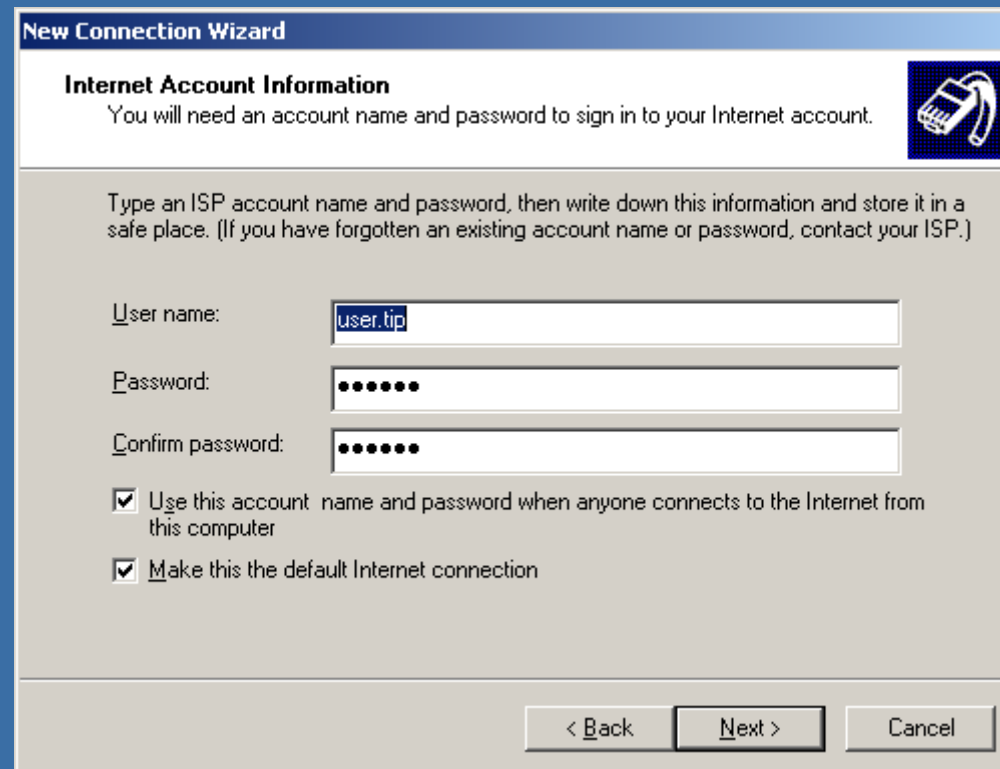
Pas 9: Dreptul de folosinta al conexiunii – toti userii care au acces la calculator sau numai din contul din care este creata



Pas 10: Introducerea datelor de conectare si alegerea optiunilor de acces:

User name: user.tip – in notificare “*Numele de acces în ruter*”

Password: ****** – in notificare “*Parola inițială de acces în ruter*”



The screenshot shows a Windows-style dialog box titled "New Connection Wizard". The current step is "Internet Account Information", which includes a small icon of a network card. The text inside the dialog reads: "You will need an account name and password to sign in to your Internet account." Below this, it says: "Type an ISP account name and password, then write down this information and store it in a safe place. (If you have forgotten an existing account name or password, contact your ISP.)" There are three input fields: "User name:" with "user.tip" entered, "Password:" with six dots, and "Confirm password:" with six dots. At the bottom, there are two checked checkboxes: "Use this account name and password when anyone connects to the Internet from this computer" and "Make this the default Internet connection". At the very bottom of the dialog are three buttons: "< Back", "Next >", and "Cancel".

New Connection Wizard

Internet Account Information
You will need an account name and password to sign in to your Internet account.

Type an ISP account name and password, then write down this information and store it in a safe place. (If you have forgotten an existing account name or password, contact your ISP.)

User name: user.tip

Password: ●●●●●●

Confirm password: ●●●●●●

Use this account name and password when anyone connects to the Internet from this computer

Make this the default Internet connection

< Back Next > Cancel

Pas 11: Finalizarea wizard-ului

Recomandam selectarea optiunii "Add a shortcut to this connection to my desktop" pentru accesul mai usor (altfel ea va putea fi folosita executand primul pas al acestui tutorial)

