



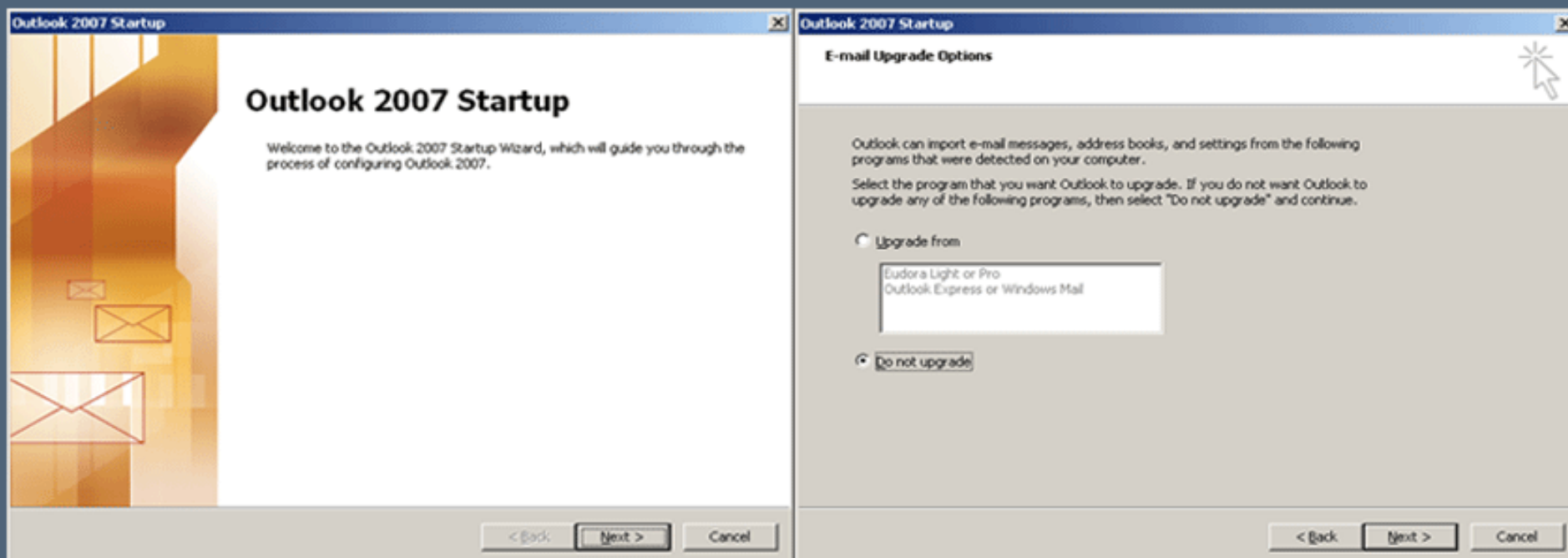
Configurare e-mail

Microsoft Outlook 2007

București, 4-sep 2007

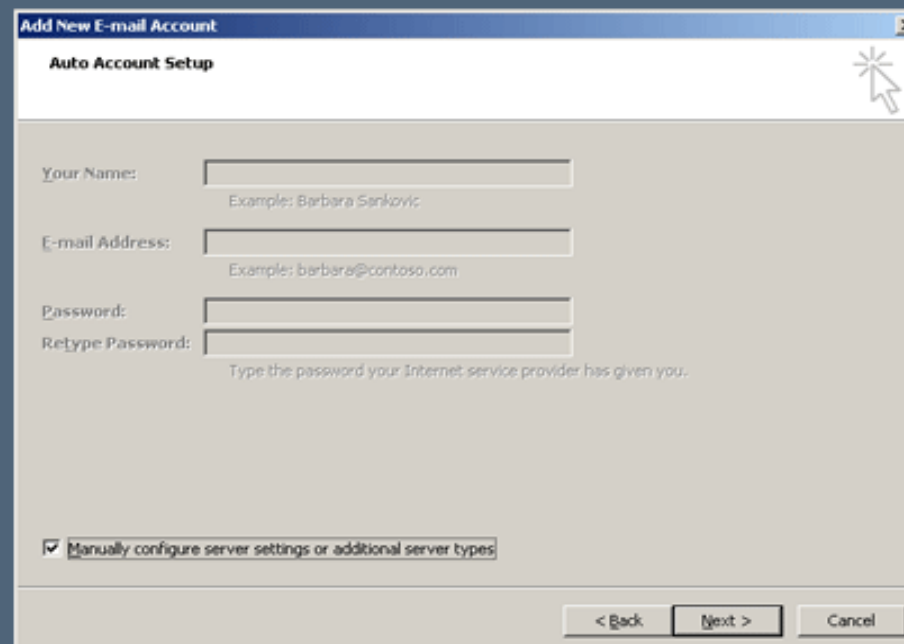
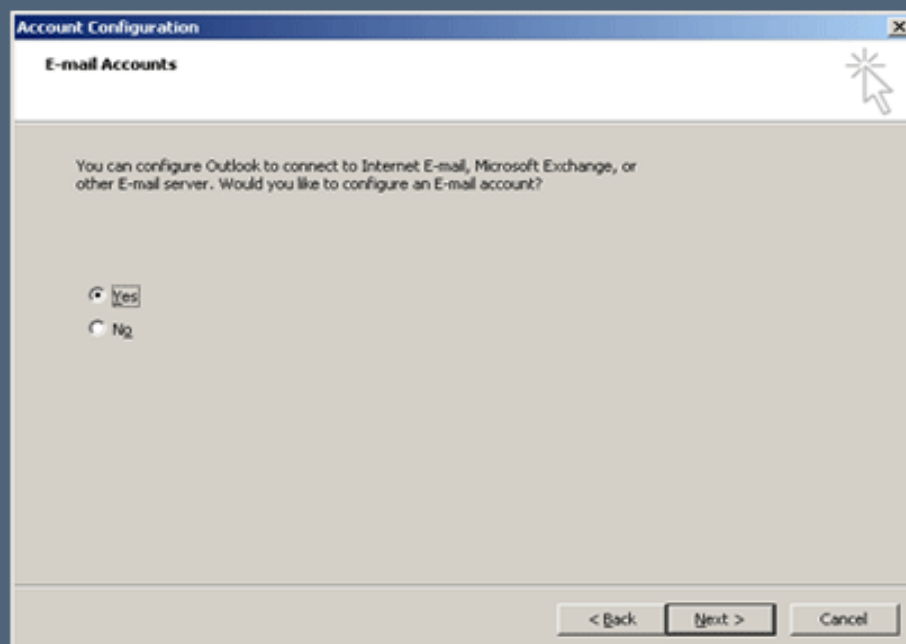
Pasul 1:

- Selectati “**Next**” dupa care in urmatoarea fereastră selectati “**Do not upgrade**”
- Apasati “**Next**”



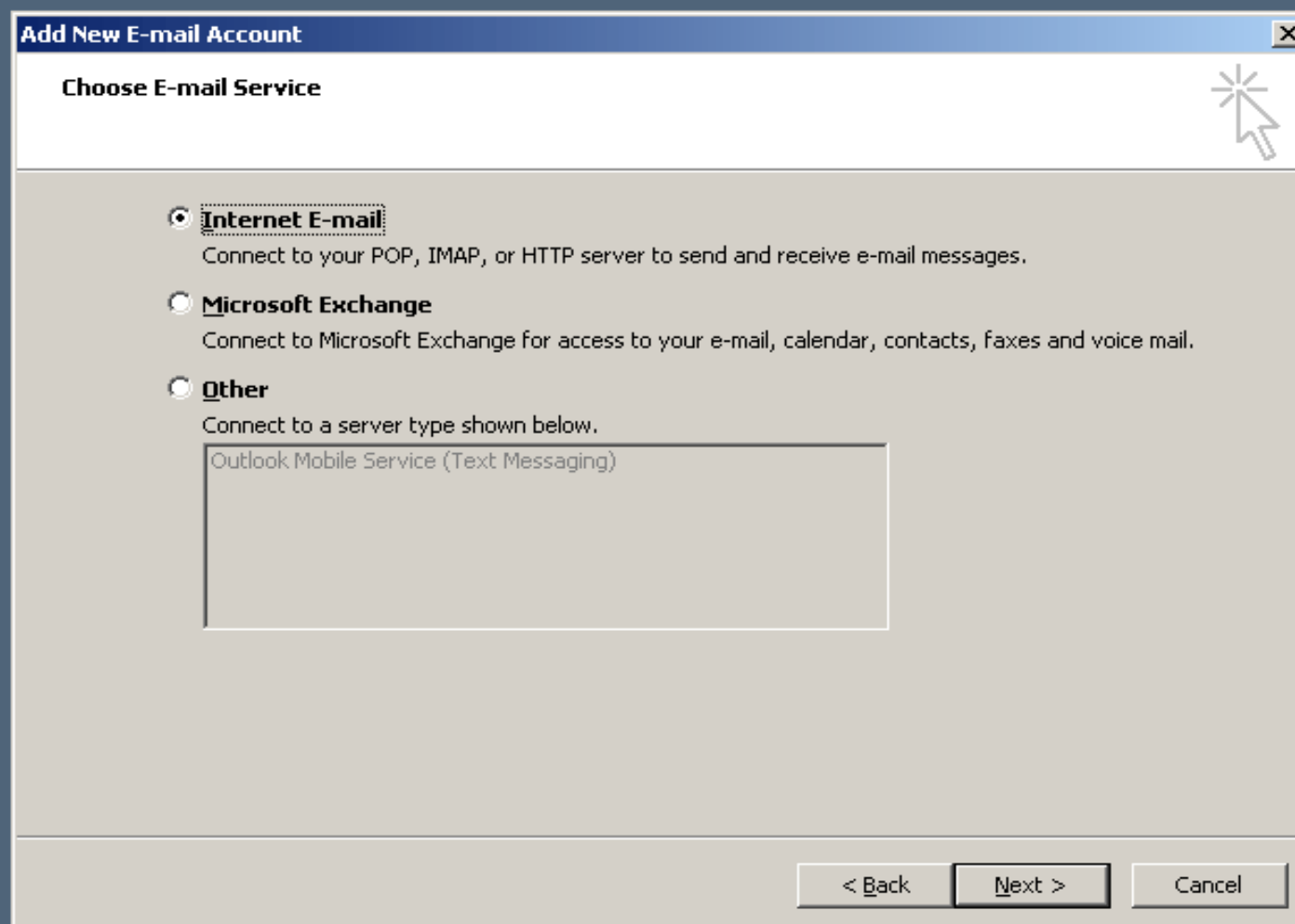
Pasul 2:

- a). Selectati “**Yes**” dupa care apasati “**Next**”
- b). In fereastra urmatoare, selectati “**Manually configure server settings or additional server types**” , dupa care apasati “**Next**”



Pasul 3:

a). Selectati “**Internet E-mail**” dupa care apasati “**Next**”



Pasul 4:

a).Completati campurile cu:

- Nume si Prenume (Acestea vor aparea in antetul mesajelor trimise la sectiunea **“From:”**)

- Adresa de E-mail - in notificare: **“Adresa de Email”**

- Tipul serverului - Selectati **“POP3”**

- Incoming mail server :

“pop.gtstelecom.ro”

- Ongoing mail server :

“relay.gtstelecom.ro”

- User name:- in notificare

“Numele de acces la mailbox”

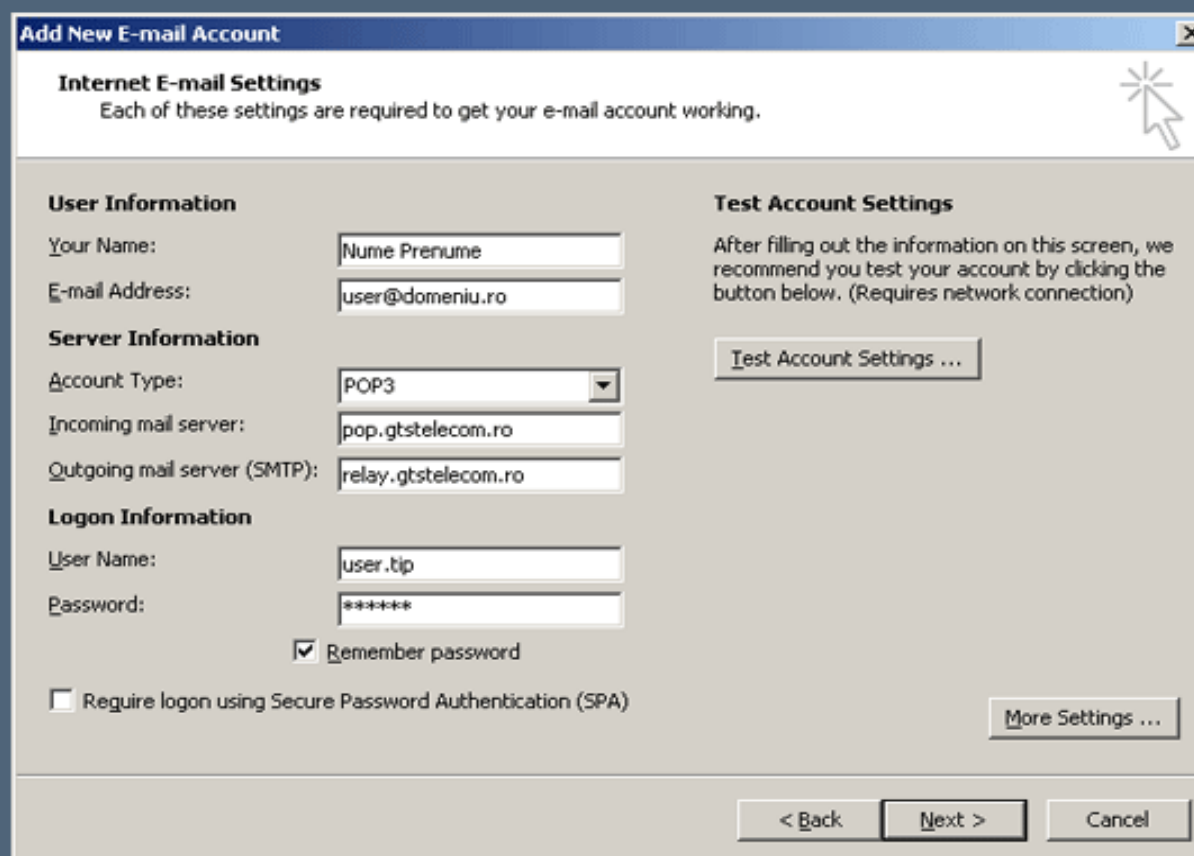
- Password: – in notificare

“Parola initiala de acces la mailbox”

b).Bifati **“Remember Password”**

c).Daca verificati casuta de e-mail din retaua altui ISP, apasati **“More settings”**, si urmati pasul 5.

Daca verificati din retea GTS Telecom, sariti Pasul 5.



Add New E-mail Account

Internet E-mail Settings
Each of these settings are required to get your e-mail account working.

User Information

Your Name:

E-mail Address:

Server Information

Account Type:

Incoming mail server:

Outgoing mail server (SMTP):

Logon Information

User Name:

Password:

Remember password

Require logon using Secure Password Authentication (SPA)

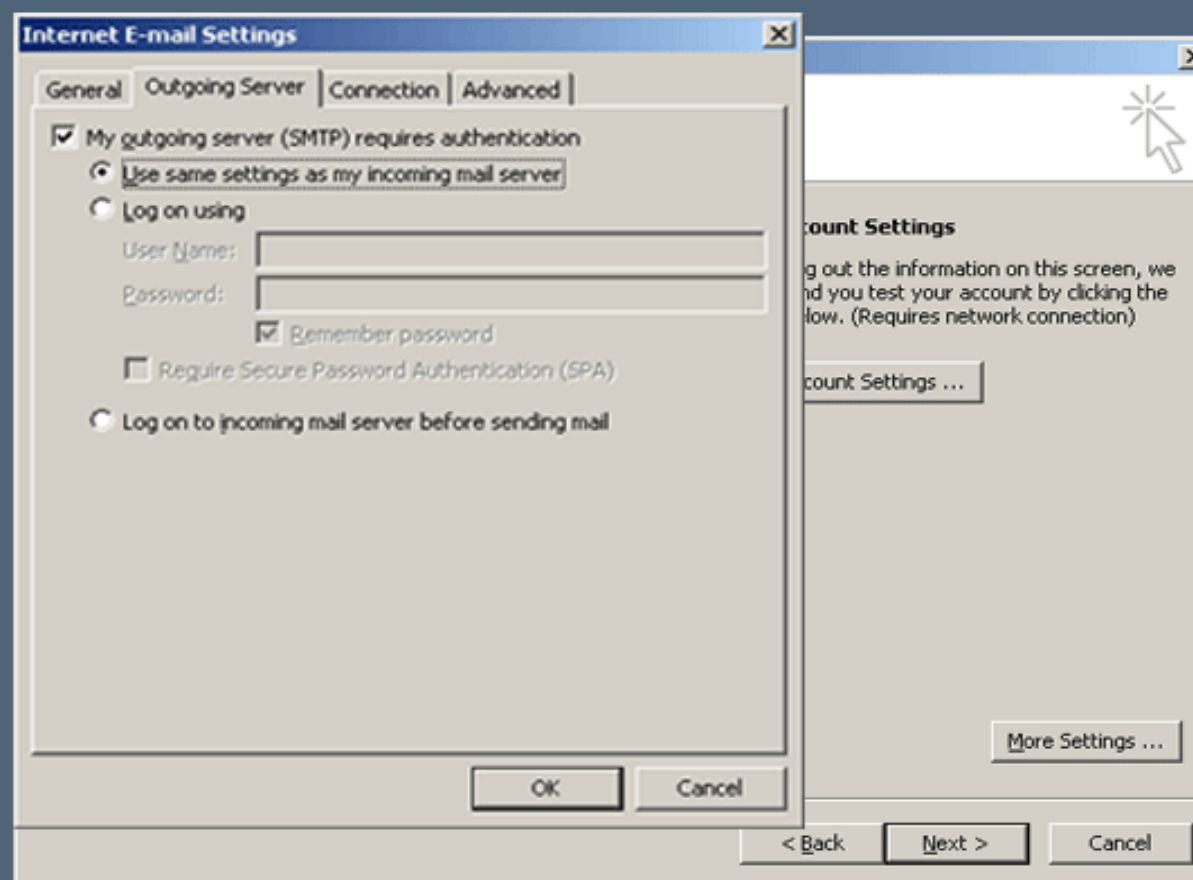
Test Account Settings

After filling out the information on this screen, we recommend you test your account by clicking the button below. (Requires network connection)

Pasul 5:

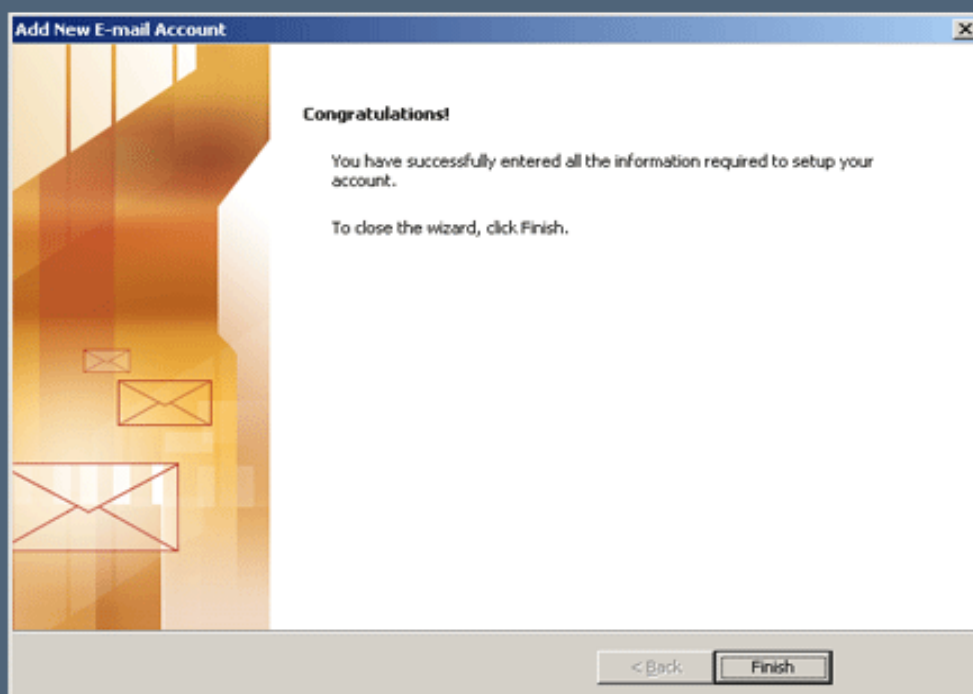
Bifati "My outgoing server (SMTP) requires authentication, si selectati "Use same settings as my incoming mail server"

Apasati "Ok", dupa care "Next"



Pasul 6:

- a). Apasati “Finish”
- b). Daca vi se cere, introduceti din nou parola, si bifati “save this password in your password list”



Pasul 7:

În caz de eroare, va apărea o fereastră cu informații despre aceasta. Pentru detalii referitoare la modul de remediere puteți accesa site-ul <http://search.microsoft.com> folosind ca și criteriu de căutare codul erorii (în cazul nostru 0x800CC92).

